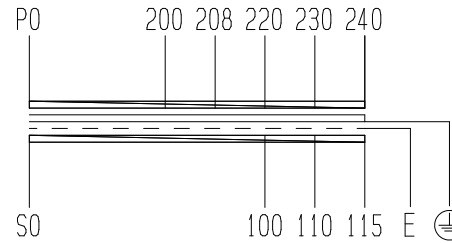




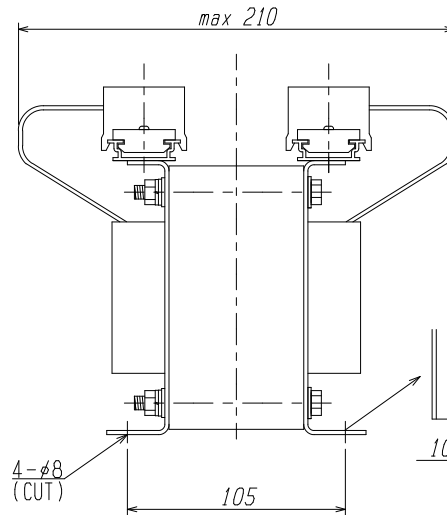
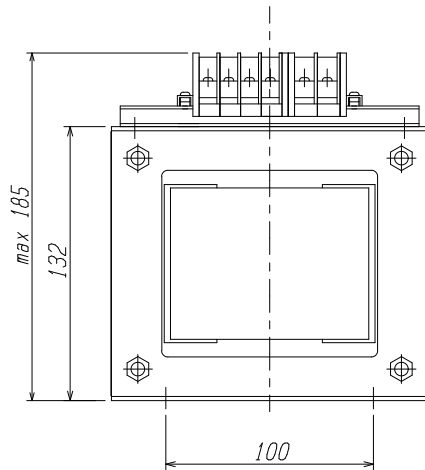
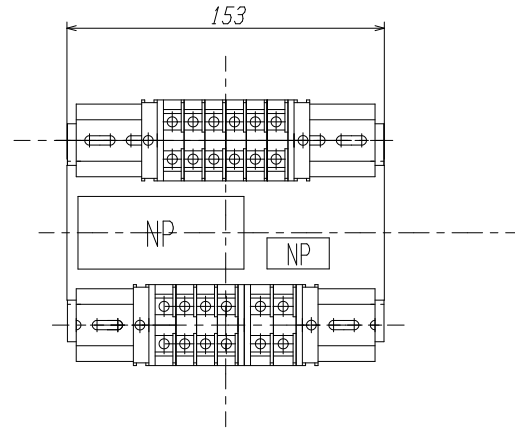
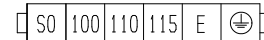
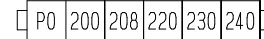
DRY-TYPE TRANSFORMER  
FOR INDOOR USE ONLY

PHASE	1	
FREQUENCY	50/60	Hz
RATING	CONT.	
CAPACITY	500	VA
PRI. VOLTAGE	240-230-220-208-200	V
SEC. VOLTAGE	115-110-100	V
SEC. CURRENT	5.00	A
INS. CLASS	Class 130(B) Des. 18	
MASS	10	kg
DIELECTRIC STRENGTH		
P-E	2.5 kV	1min
P-S	2.5 kV	1min
S-E	2.5 kV	1min
STANDARD UL 1446		
UL File E222180(Ins.)		

CONNECTION DIAGRAM



TERMINAL ARRANGEMENT



WITH EARTH-SHIELD PLATE BETWEEN  
H. V. AND L. V. WINDING

TERMINAL (TOYOGIKEN)

- PRI.: PT-30 30A, M4
- SEC.: PT-30 30A, M4
- ⊕ : PT-40 40A, M4
- E : PT-40 40A, M4

NAME PLATE

DRY-TYPE TRANSFORMER	
TYPE AUL-500E	
PHASE 1 CLASS 130(B)	
CAPACITY 500 VA FREQ. 50/60 Hz	
PRI. V 240-230-220-208-200 V	
SEC. V 115-110-100 V	
SEC. A 5.00 A MASS 10 kg	
% IMP % at 75 °C	
DATE SER. No.	
AIHARA ELECTRIC CO., LTD.	

FILE No. E222180  
Class130(B)Ins. Des. 18

尺 度 SCALE	/	検 査 CHECKED	設 計 DESIGNED	製 図 DRAWN	担 当 者 APPROVED	名 称 TITLE	AUL-500E
单 位 UNIT	mm					DRY-TYPE TRANSFORMER	
符 号 MARK	年 日 DATE	記 事 CONTENTS	日 付 DATE	相 原 電 機 株 式 有 限 公 司 AIHARA ELECTRIC CO., LTD.		圖 面 番 号 DRG NO.	
更 変 CHANGE			第 三 角 法 3RD ANGLE PROJECTION				